

www.suncoastnps.org

The Suncoast Grapevine

Newsletter of the Suncoast Native Plant Society, Inc.

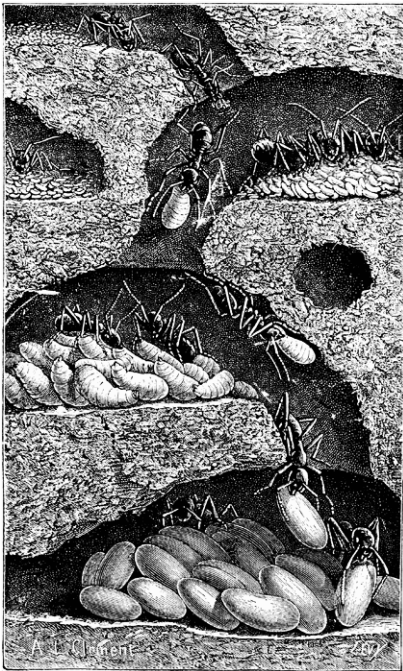


Volume 28 Number 4

April 2011

Native Florida Pollinators: What's Buzzing In Your Garden?

Presented by Mark Deyrup
Wednesday, April 20 @ 7pm
Hillsborough County Extension Service



This month's program will be presented by Dr. Mark Deyrup from the Archbold Biological Station. His talk will focus on the many roles that insects have with their relationship with plants. You can expect to learn not only about pollinators, but a whole array of insects that maybe calling your plants home!

Dr. Deyrup has more than 30-years of history at Archbold Biological Station which is located in one of the most pristine scrub habitats along the Lake Wales Ridge. His work there is as an Entomologist who specializes in scrub insects. Dr. Deyrup has a special fondness for ants and is one of the leading experts on rare scrub ants. Some of his recent work focuses on native bees and their pollination biology.

Dr. Deyrup is considered by many to be a jack of all trades as an ecologist, and has become an avid native plant gardener as well. His years of dedication at Archbold have made him very knowledgeable about the many plants and animals that can be found in Florida's scrub habitats. You will find he is very enthusiastic about his craft, with a great sense of humor!

- Submitted by Troy Springer

Editor's Note: To find out more about Archbold Biological Station and the variety of opportunities and projects going on at the site, please log on to their very informative website: <http://www.archbold-station.org/>



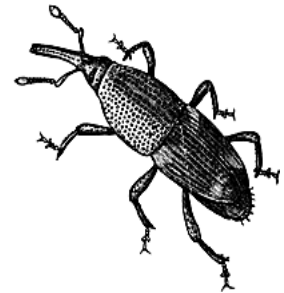
The Florida Native Plant Society was organized in 1980 to promote the preservation, conservation, and restoration of the native plants and native plant communities of Florida. For more information about the Florida Native Plant Society, please visit our web site: www.fnps.org

March Field Trip Recap: Bugging Out! Exhibit Museum of Science & Industry

On March 19th, ten of us took part in our field trip to the Museum of Science and Industry (MOSI). We started with the *Bugging Out!* exhibit, which was our main focus for the day. The exhibit had many different panoramas and displays explaining the importance of insects and the valuable services they provide to our environment in many different habitats as well as some of the problems that they can cause in our houses and fields. It also included live insects to help demonstrate how they live their lives.

We then went in to see the amazing display of *Insect Artistry* by Jennifer Angus (<http://www.jenniferangus.com/home.htm>). It was created with a multitude of different insects from around the world displayed on walls, in small Victorian type houses, and in other creative ways to help show off the beauty of the various insects. It was a very impressive display that is worth seeing!

After that, we explored some of the other exhibits there, including *The Amazing You* which had numerous displays - many of which were interactive to help delve into the human body and human life from birth to death. The majority of us then took in the IMAX show, *Bugs! A Rainforest Adventure*. It was a fabulous presentation (which is typical for IMAX films), shot in Borneo, showing insects up close in their daily lives. We then followed that up with a hike on some of the trails behind MOSI, led by Shirley Denton, to view many native plants that are thriving on MOSI's property.

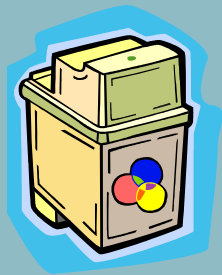


- Submitted by Ron Huston

THANK YOU, MARCH DONORS!



- Troy Springer
- Fred & Barbara Mulholland
- Bunny Worth
- Joel Jackson



Nancy Huston and Emi Evans provided the refreshments.

Please keep those ink jet cartridges coming!
We appreciate your support!

Why Attend the FNPS Conferences?

I joined the FNPS several years ago to find out where to buy native plants. I got some emails from the Heartland chapter which I had randomly picked as my chapter (I am about the same distance from them and the Suncoast chapter, being on the east side of Plant City). A couple years later, I got inspired to attend a meeting which I enjoyed but due to a schedule change, did not return to any more meetings. I always got the state newsletters and the conference info but it didn't seem to apply to me and I didn't know anyone in the organization so I was hesitant to attend. The first conference I attended was 2007 in Gainesville. I actually went as a vendor to volunteer at the Bok Tower plant sale table outside. The plant selection at the sale was incredible, I was awed by the amount of plants and quickly filled my car with purchases. I had read that Janisse Ray was the keynote speaker, so I read her books and was prepared for a great talk. She did not disappoint me, I was inspired and entertained. I got my books autographed and got a couple minutes to chat with her. I would have paid the price of admission just to hear her talk. I got to talk to a lot of interesting people while sitting at the plant table. I attended the evening socials and while the locations were interesting, I felt a little out of place since I didn't know many people.

Last year at the 2010 conference in Tallahassee, I attended Saturday and Sunday but did not attend the social events. I met many friendly people from around the state and enjoyed many of the talks. The one of the highlights for me was Bailey White, I laughed so much that tears were streaming down my face. I saw an informal talk at lunch on a massive area of trout lilies blooming in Georgia – the pictures were incredible. There was another talk about Pitcher plants as art. Since I was going on the Sunday field trip to see pitcher plants and I like to paint water colors, I loved the art talk. The field trip topped off a great 2 days. For me, it was like going to an exotic location but it was an easy walk through Florida native plants – grassy orchids and pitcher plants being the big attractions. The trip was led by knowledgeable people eager to answer questions and share their passion for the subject. Seeing the pitcher plants was definitely worth the trip to Tallahassee and made the cost of the field trip a bargain! I volunteered to drive and one of my riders was the native plant leader from Tennessee who co-authored a great Appalachian wildflower reference book. You never know who you will meet and are sure to find friends at the conferences. There is a wide variety of vendors from T-shirts and note cards to wild flower seeds. The silent auction offers many one of a kind items and it a major fund raising opportunity for FNPS.



I have checked out the Maitland 2011 field trips and am eager to see new places even closer to home. I am planning to attend the Friday or Saturday talks as well. The 2012 conference will be about 5 miles from my house so I hope to contribute some volunteering time as well as enjoy the plant sale and the experience of being with hundreds of native plant lovers. **Please come and join us, there is something for everyone!**

- Submitted by Janet Bowers

Early registration for the 2011 conference ends April 14th!

Log onto the FNPS website for details:

<http://www.fnps.org/pages/conference/>

Upcoming Events & Announcements

April Field Trip: Archbold Biological Station

Our field trip on Saturday, April 23rd will be to Archbold Biological Station, which is located at the southern end of the Lake Wales Ridge near Lake Placid. The station protects a 5,193 acre globally significant Florida Scrub preserve, an ancient sandy ecosystem of south-central Florida. Our leader will be Dr. Mark Deyrup, who is also doing our April Program, and he is the Senior Research Biologist and Program Director for the Entomology Program at the site. Although a long distance from the Tampa area, this trip should be well worth the drive! Please call me at 813-951-0946 if you are interested in going, and please register by Thursday, April 21st so we can provide the field trip leader with an idea of the group size.

May Field Trip: Patios, Preserves & Public Spaces... Making Connections

For May, Suncoast is not going to have our own trip because it would fall on the same weekend as the annual FNPS conference. Instead we are encouraging everyone to take advantage of the conference and the field trips it has to offer. **So please register for the conference and enjoy the many field trip choices that are available!**

- Submitted by Ron Huston



The poster features a central graphic with palm fronds and images of a patio, a preserve, and public spaces. Text on the left side reads: "Patios, Preserves and Public Spaces... Making Connections". The top right contains the Florida Native Plant Society logo and conference details: "FLORIDA NATIVE PLANT SOCIETY 31ST ANNUAL CONFERENCE MAY 19-22, 2011". Below this, it lists "Renowned Speakers RICK DARKE and RUTHERFORD PLATT" and a list of activities: "Workshops • Exhibitors • CEUs Guided field trips • Native plant sales Research presentations • Social events Youth program • Authors' book signings". A green box on the bottom left says "FLORIDA EXOTIC PEST PLANT COUNCIL CONFERENCE MAY 17-20, 2011 AT SAME LOCATION". The bottom right provides the venue: "SHERATON ORLANDO NORTH HOTEL 600 North Lake Destiny Drive Maitland, FL 32751" and contact information: "For reservations, call 800-325-3535 or 407-660-9000. For Conference discount, ask for FNPS rate." The bottom of the poster has a registration link: "Registration and additional information available online at www.fnps.org/pages/conference/" and contact instructions: "For questions or to receive conference information by mail, contact FNPS at 321-271-6702 or send an email to info@fnps.org."

PLANT PROFILE

Common name: Sparkleberry, farkleberry, tree huckleberry

Botanical name: *Vaccinium arboreum* Marshall

Family: Ericaceae

Plant Habit: Deciduous or semi-evergreen shrub or small tree

Habitat: Dry woodlands, hammocks, and scrub

Size: 25 to 30 ft (h), often much shorter

Leaves: Alternate, simple, oval to elliptical, margins mostly entire; apex abrupt, short with small point

Bloom: Small white urn-shaped flowers on long stalks

Flowering time: Spring

Fruit: Shiny black berries

Bark: Outer bark exfoliating; inner bark smooth, reddish brown; trunk is typically crooked and leaning

Distribution: Northern Florida to Lee County



Vaccinium arboreum
Photo by Shirley Denton

Growing conditions

Light: Part or filtered sun

Water: drought tolerant

Soil: prefers acidic conditions

Propagation: Seeds

Maintenance: Annually to remove dead branches

Availability: Native nurseries

Comments: Berries are edible but bland and often eaten by songbirds

References:

Huegel, Craig N., 2010, *Native Plant Landscaping for Florida Wildlife*. University Press of Florida, Gainesville, Florida, 285 p.

Nelson, Gil, 1996, *The Shrubs and Woody Vines of Florida*. Pineapple Press, Inc., Sarasota, Florida, 391 p.

Osorio, Rufino, 2001, *A Gardener's Guide to Florida's Native Plants*. University Press of Florida, Gainesville, Florida, 345 p.

Wunderlin, R.P. and B.F. Hansen, 2003, *Guide to Vascular Plants of Florida*, Second Edition; University Press of Florida, Gainesville, Florida, 787 p.

Wunderlin, R.P. and B.F. Hansen, 2011, *Atlas of Florida Vascular Plants* (<http://plantatlas.usf.edu/>).

Information compiled by George R. Kish

Photos by Shirley Denton

Florida Native Plant Society Membership Application

Membership in the Florida Native Plant Society enables you to receive their wonderful quarterly magazine *The Palmetto*. Joining the SNPS also entitles you to membership privileges in the Suncoast Native Plant Society and a subscription to their monthly newsletter *The Suncoast Grapevine*. Contact the membership chair, Shirley Denton, at 986-6485.

New Member Renewal

Name _____

Business name or organization _____

Address _____

City, State and Zip _____

Home phone _____ Email _____

Check pertinent category:

- | | |
|--|---|
| <input type="checkbox"/> Individual/Renewal \$35 | <input type="checkbox"/> Not-for-profit organization \$50 |
| <input type="checkbox"/> Full time student \$15 | <input type="checkbox"/> Business or corporate \$125 |
| <input type="checkbox"/> Library subscription \$15 | <input type="checkbox"/> Supporting \$100 |
| <input type="checkbox"/> Family or household \$50 | <input type="checkbox"/> Donor \$250 |
| <input type="checkbox"/> Contributing \$75 | |
| <input type="checkbox"/> Life \$1,000 | |

Make check payable to **FNPS**.

Detach and mail to:

FNPS

P.O. Box 278

Melbourne, FL 32902-0278

